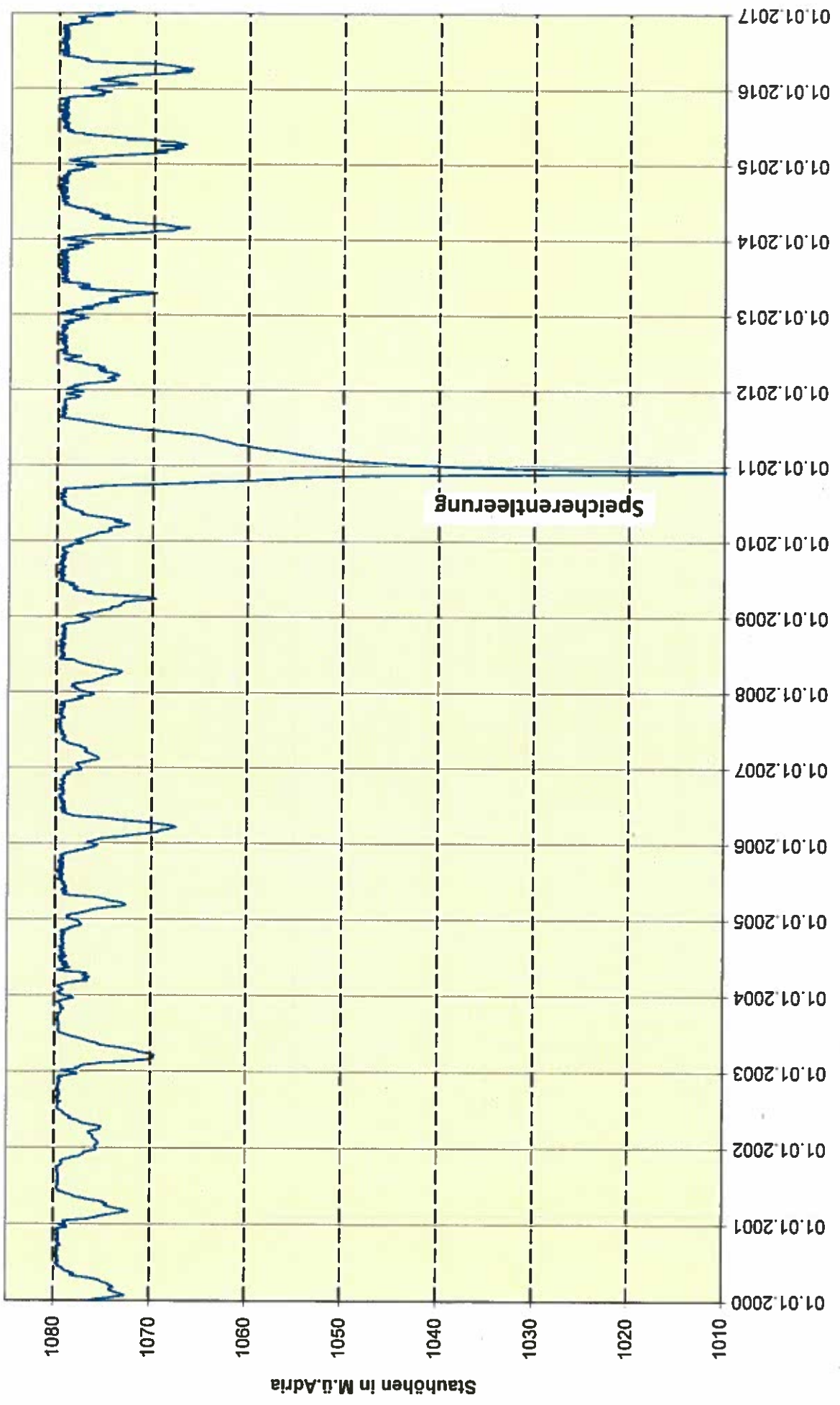
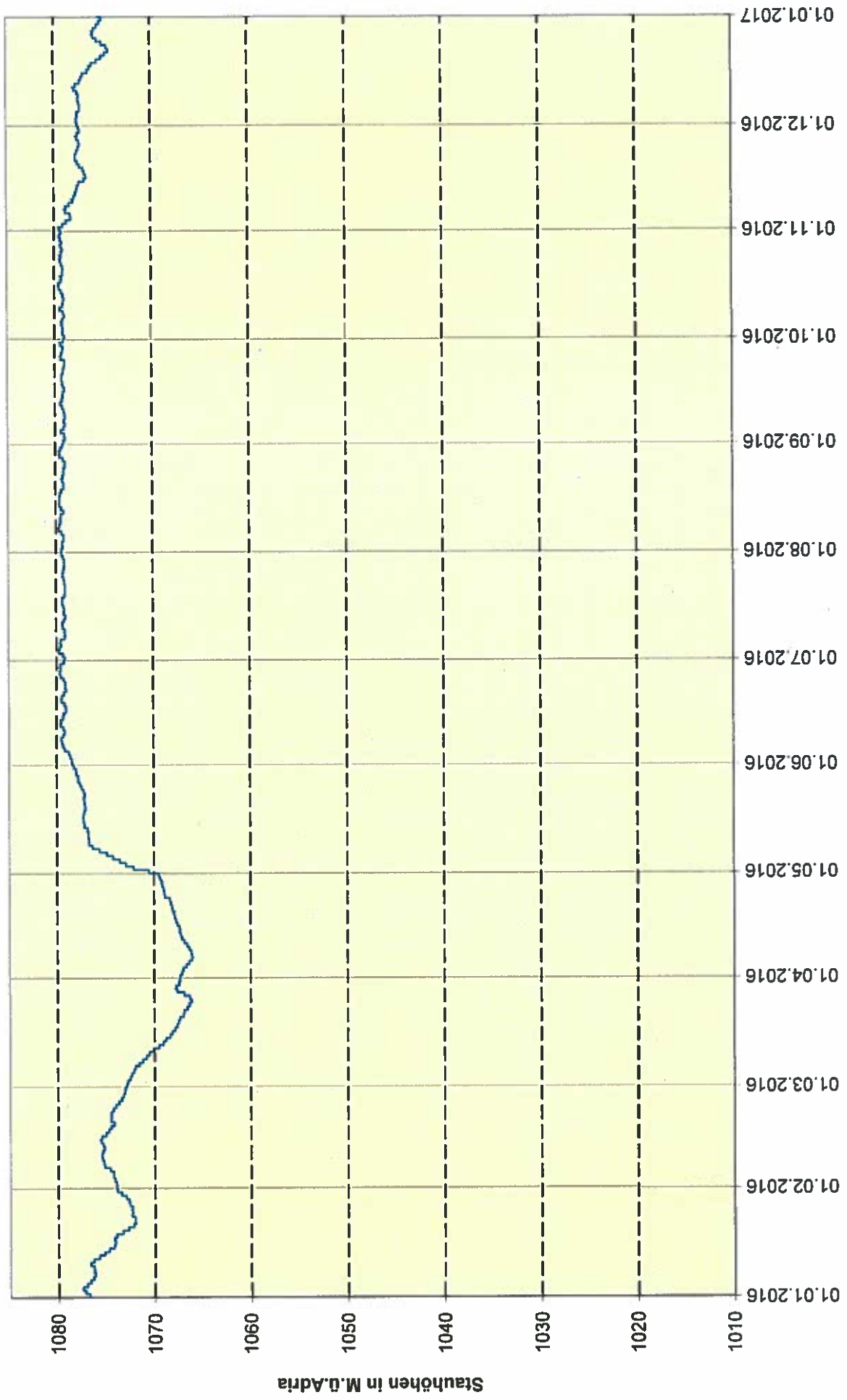
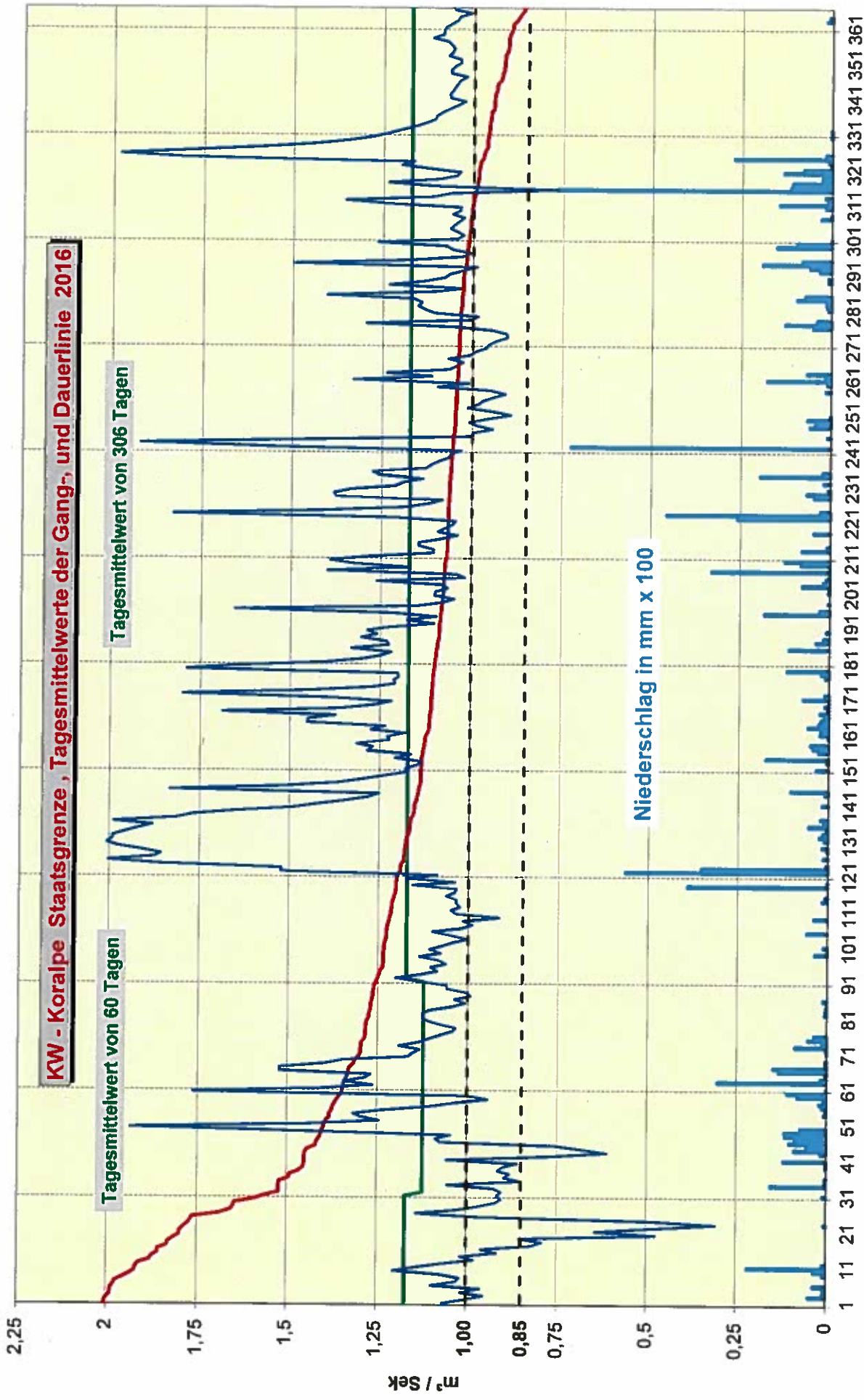


**KW - KORALPE Speicherstände von 2000 bis 2016**

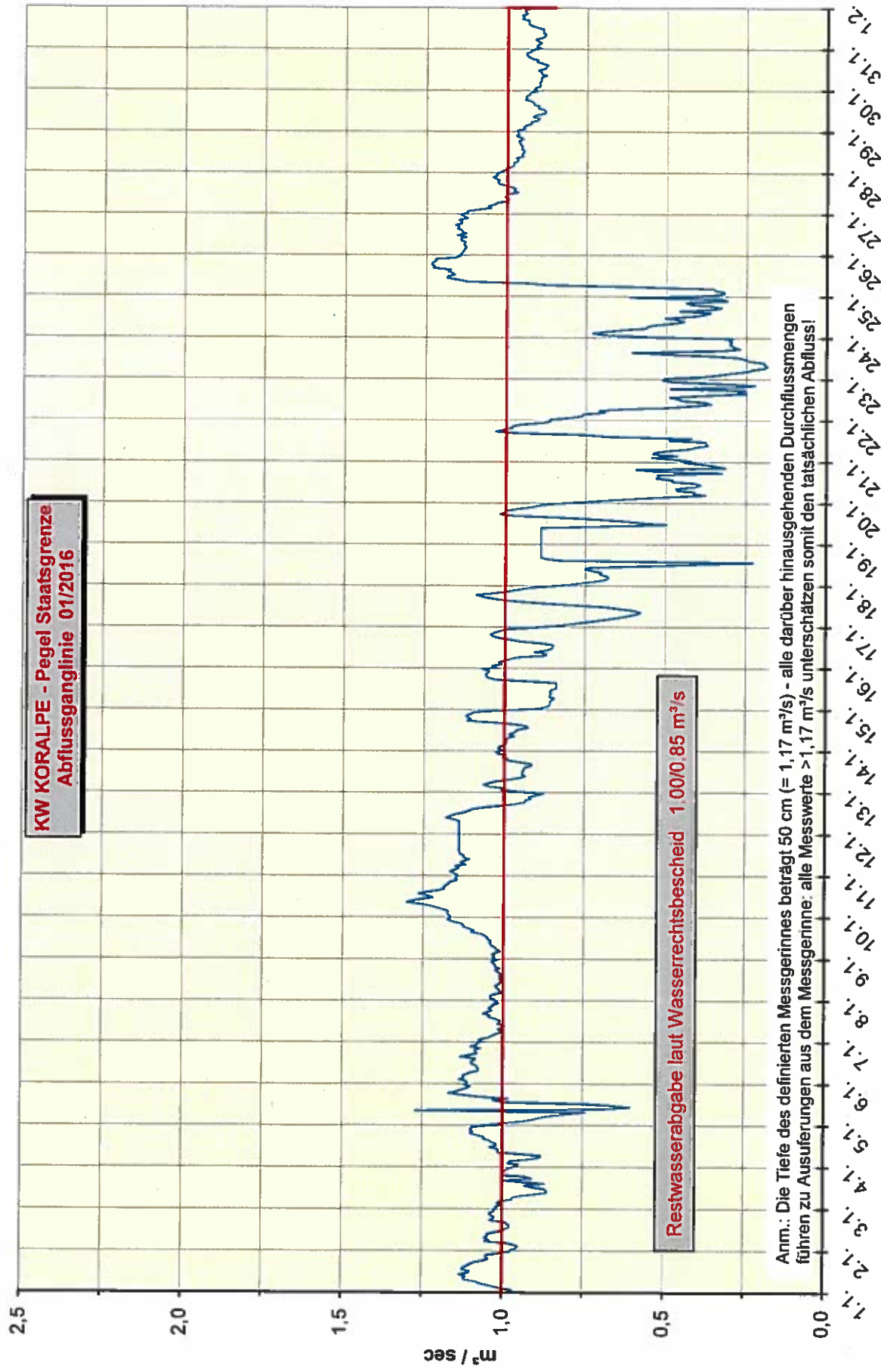


**KW - KORALPE Speicherstände 2016**



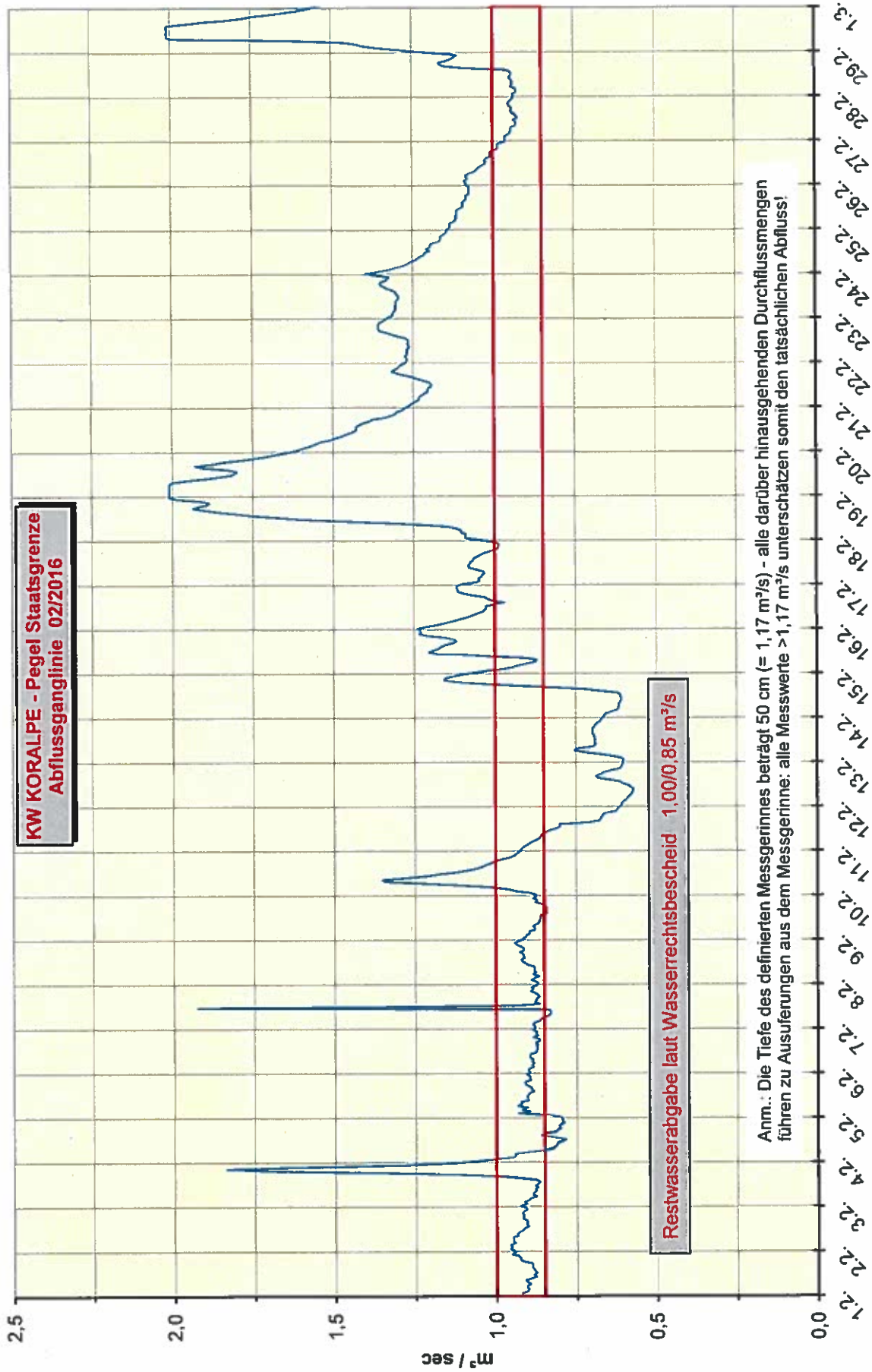


Anm.: Die Tiefe des definierten Messgerinnes beträgt 50 cm (= 1,17 m<sup>3</sup>/s) - alle darüber hinausgehenden Durchflussmengen führen zu Ausuferungen aus dem Messgerinne: alle Messwerte >1,17 m<sup>3</sup>/s unterschätzen somit den tatsächlichen Abfluss!



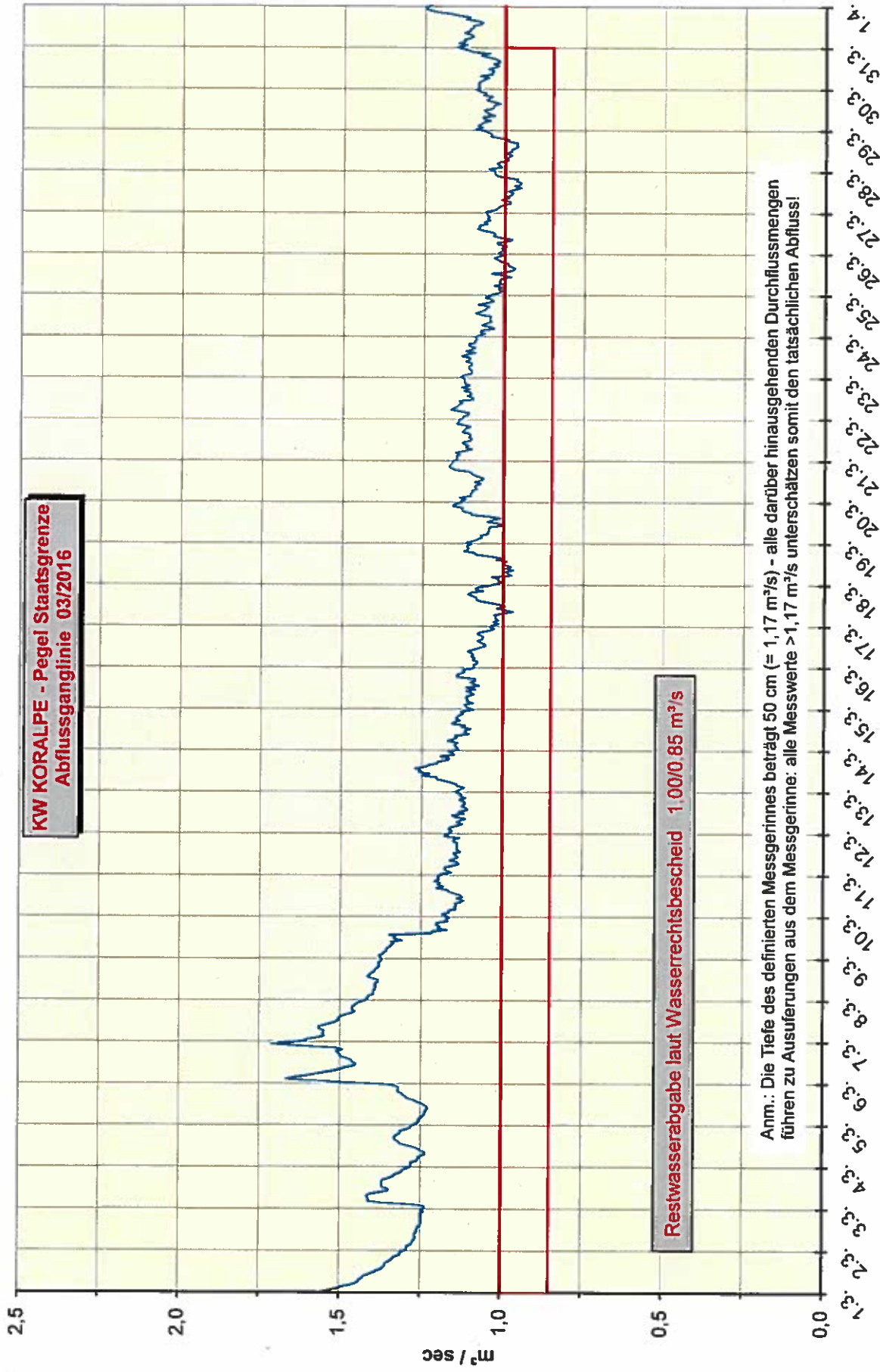
KS-KT, Talsperrenüberwachung 02/2017

KS-KT, OrtKreu



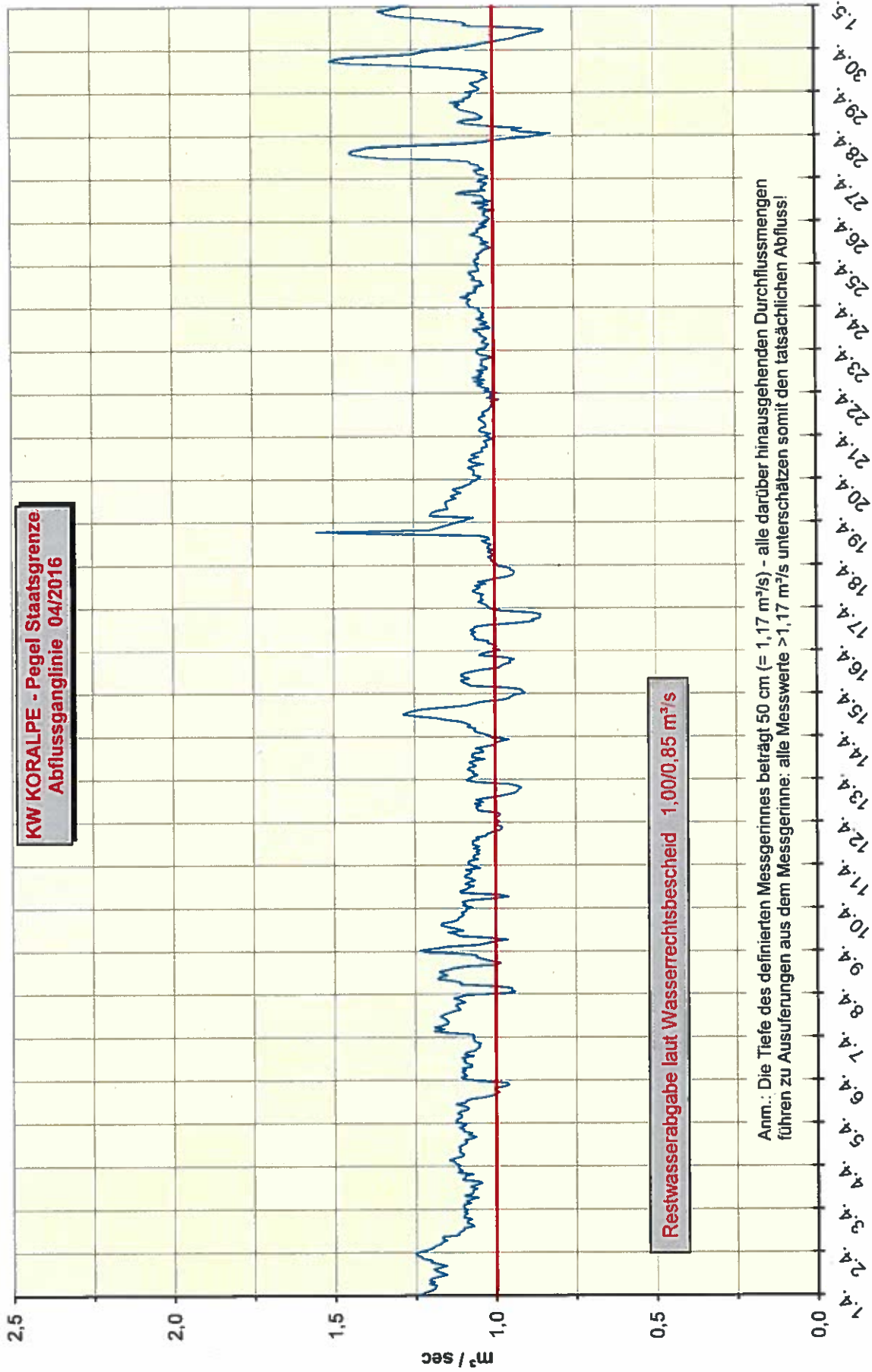
KS-KT, Talsperrenüberwachung 02/2017

KS-KT, Ort/Kreu



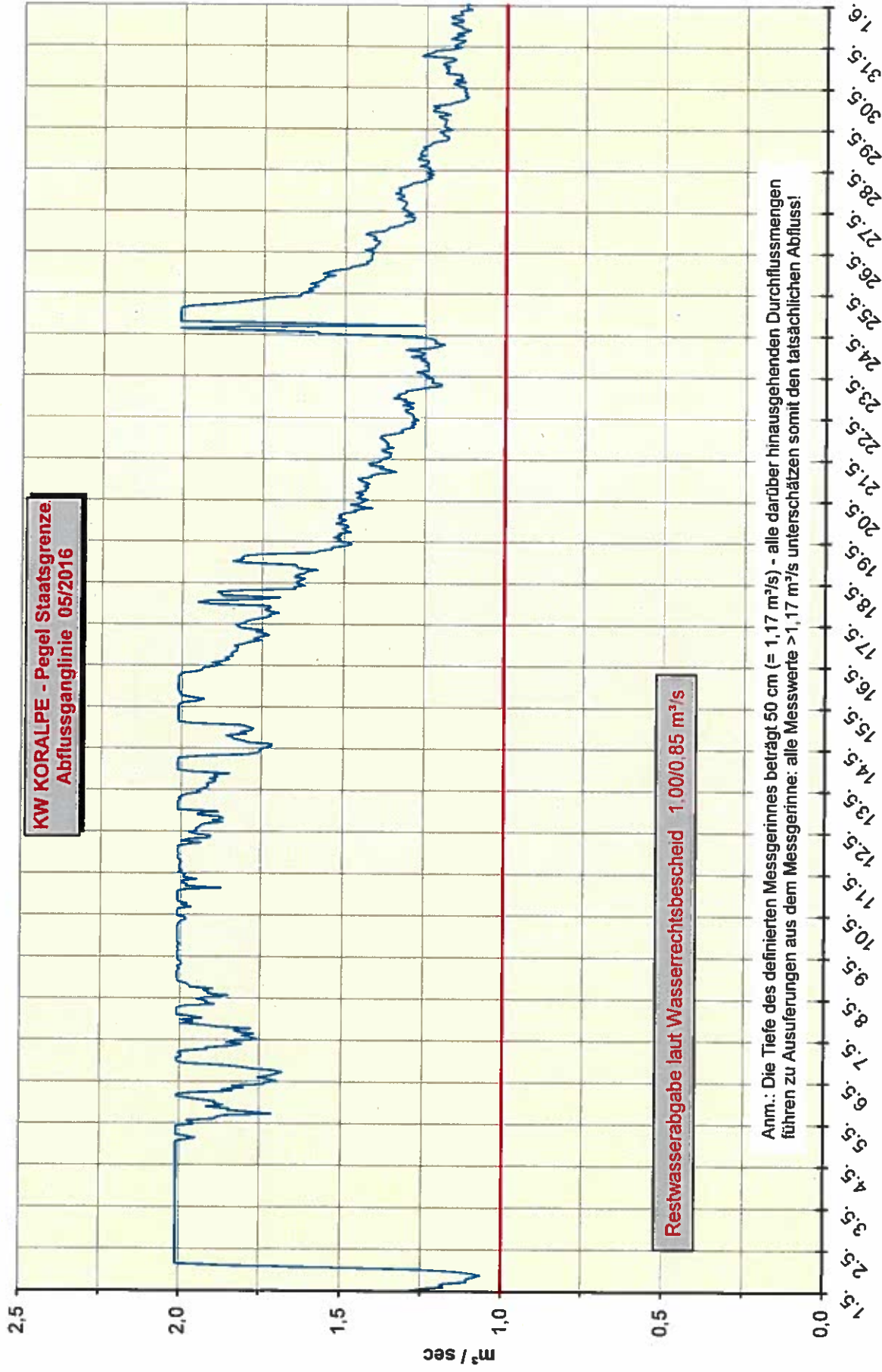
KS-KT, Talsperrenüberwachung 02/2017

KS-KT, Ort/Neu



KS-KT, Talsperrenüberwachung 02/2017

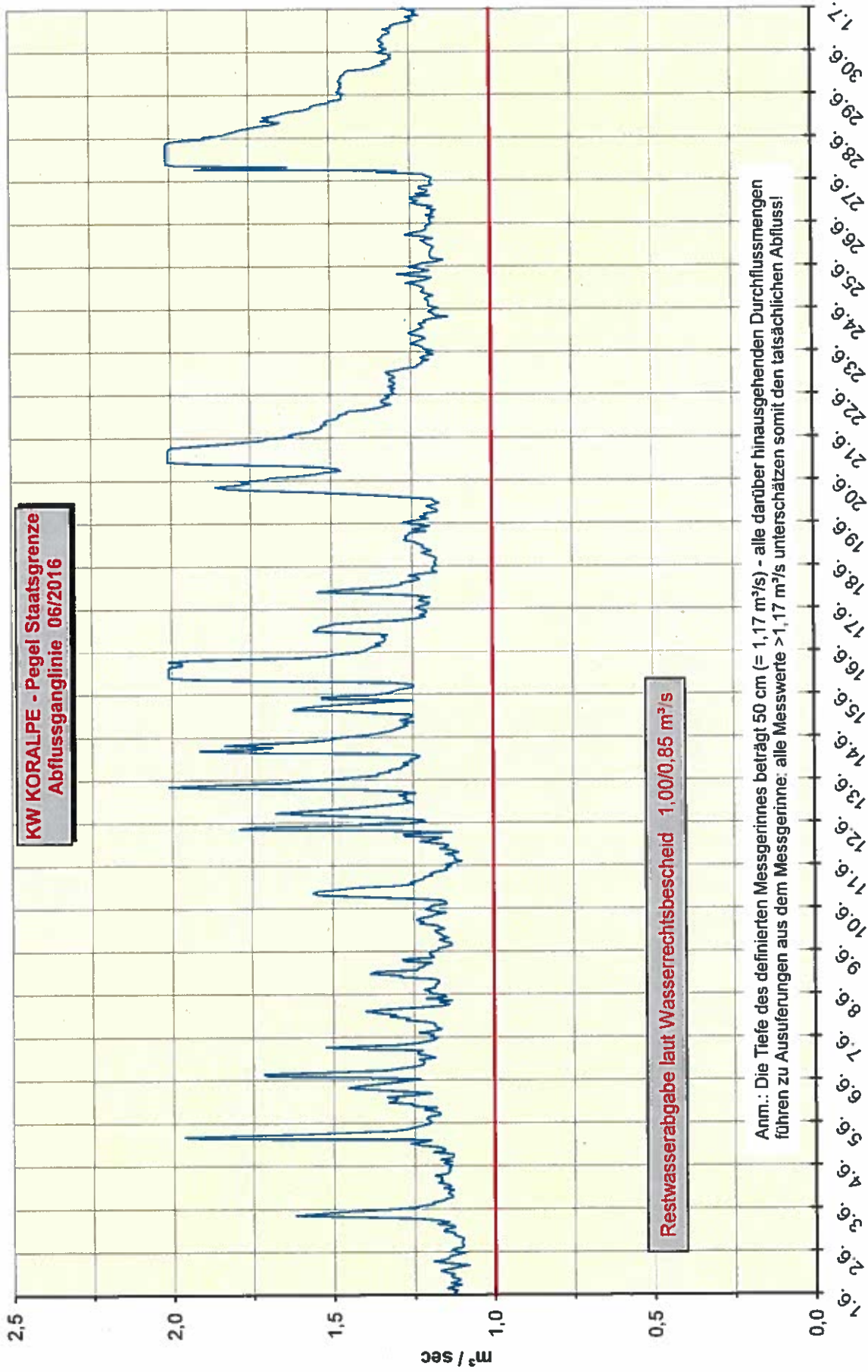
KS-KT, OriftKreu

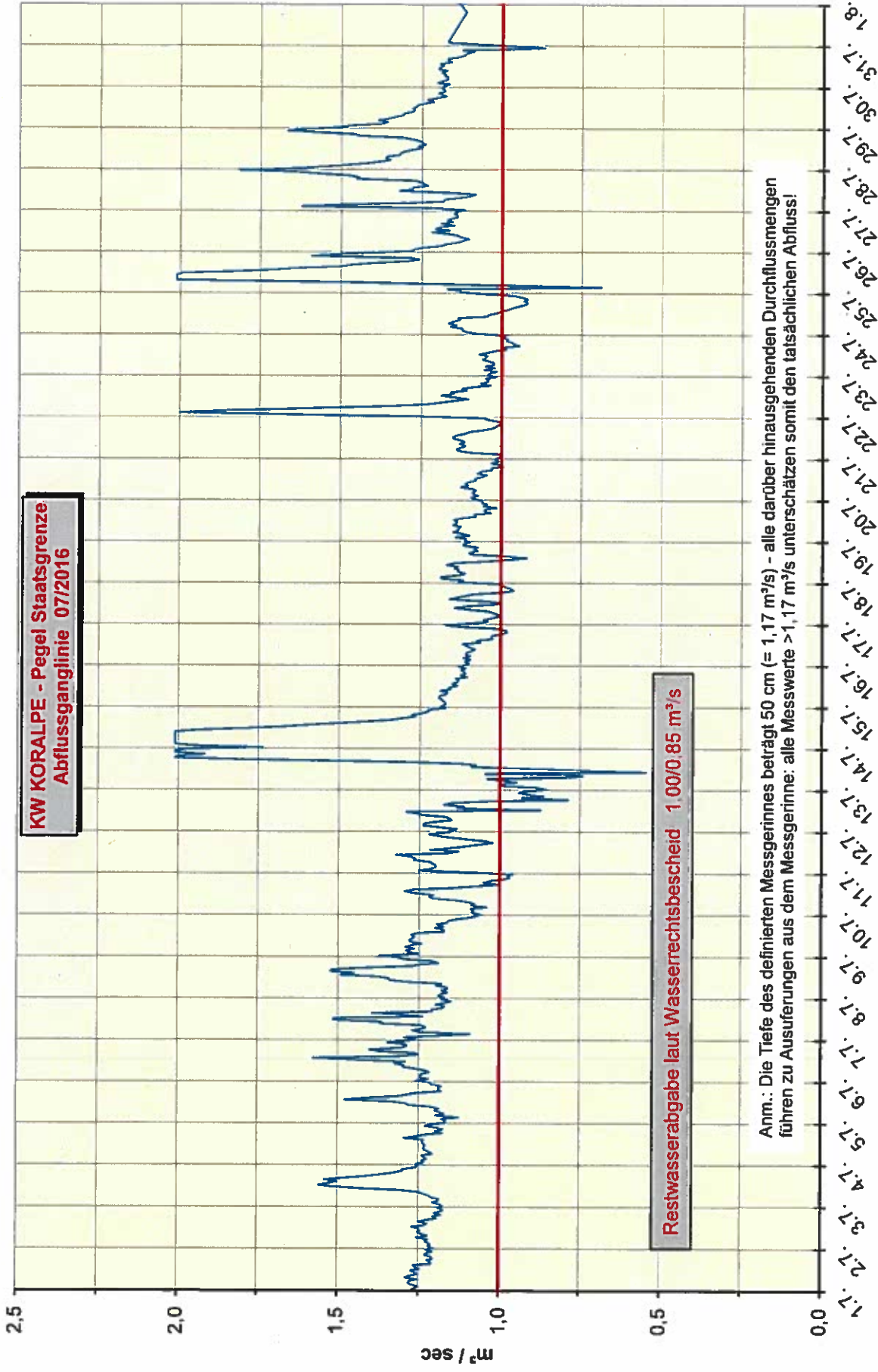


KS-KT, Talsperrenüberwachung 02/2017

KS-KT, Ort/Kreu

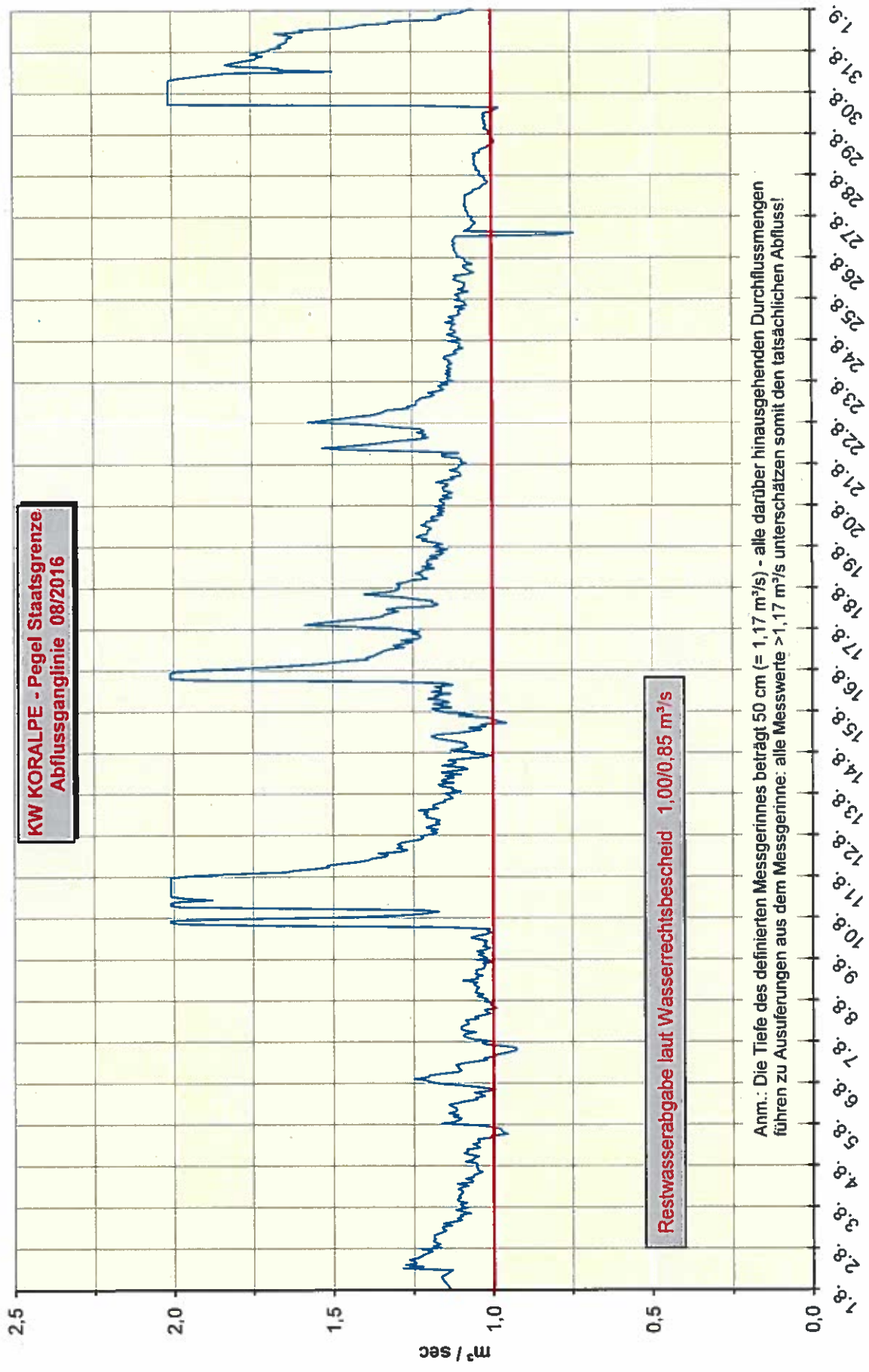






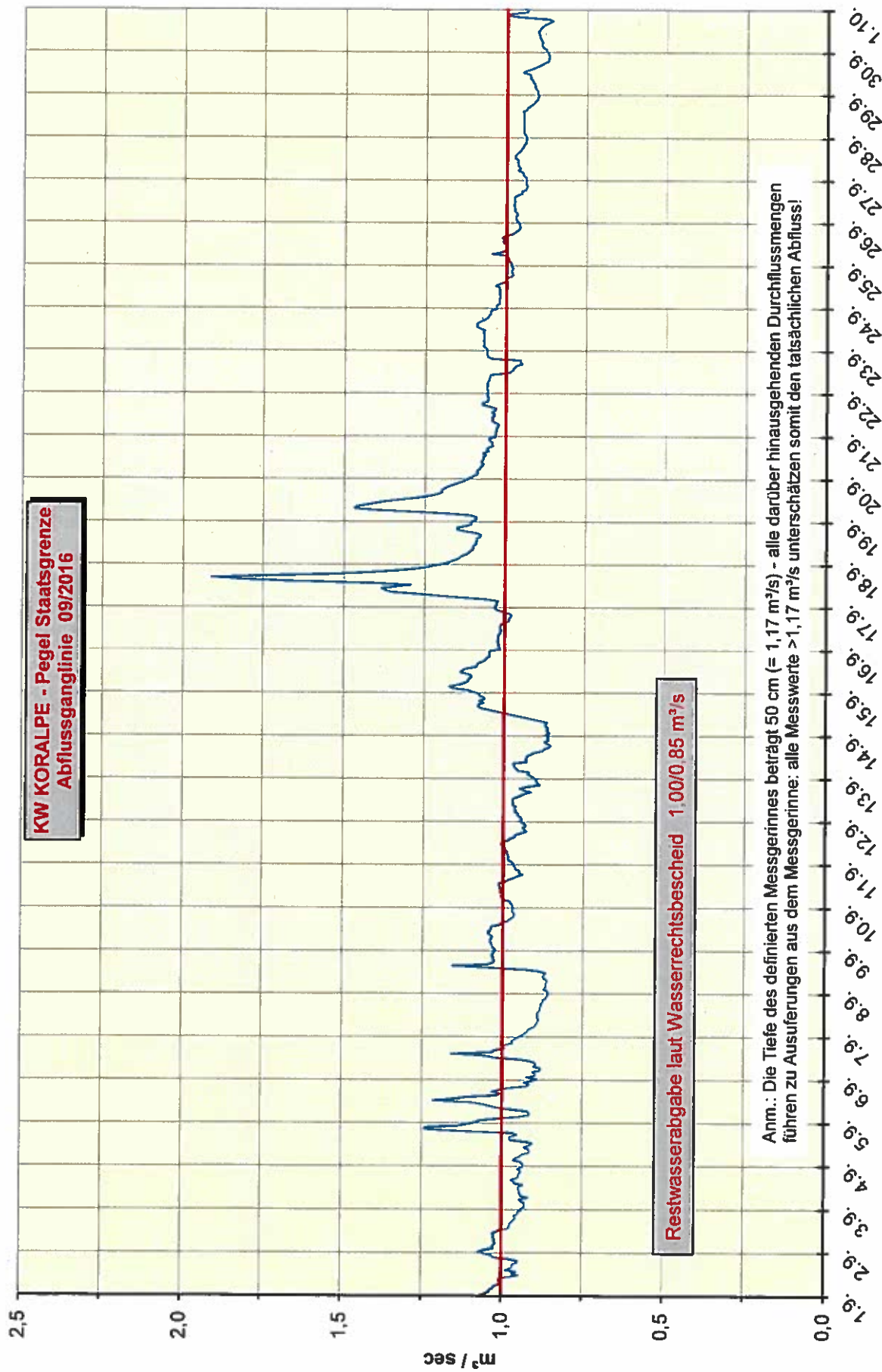
KS-KT, Talsperrenüberwachung 02/2017

KS-KT, Onf/Kreuz



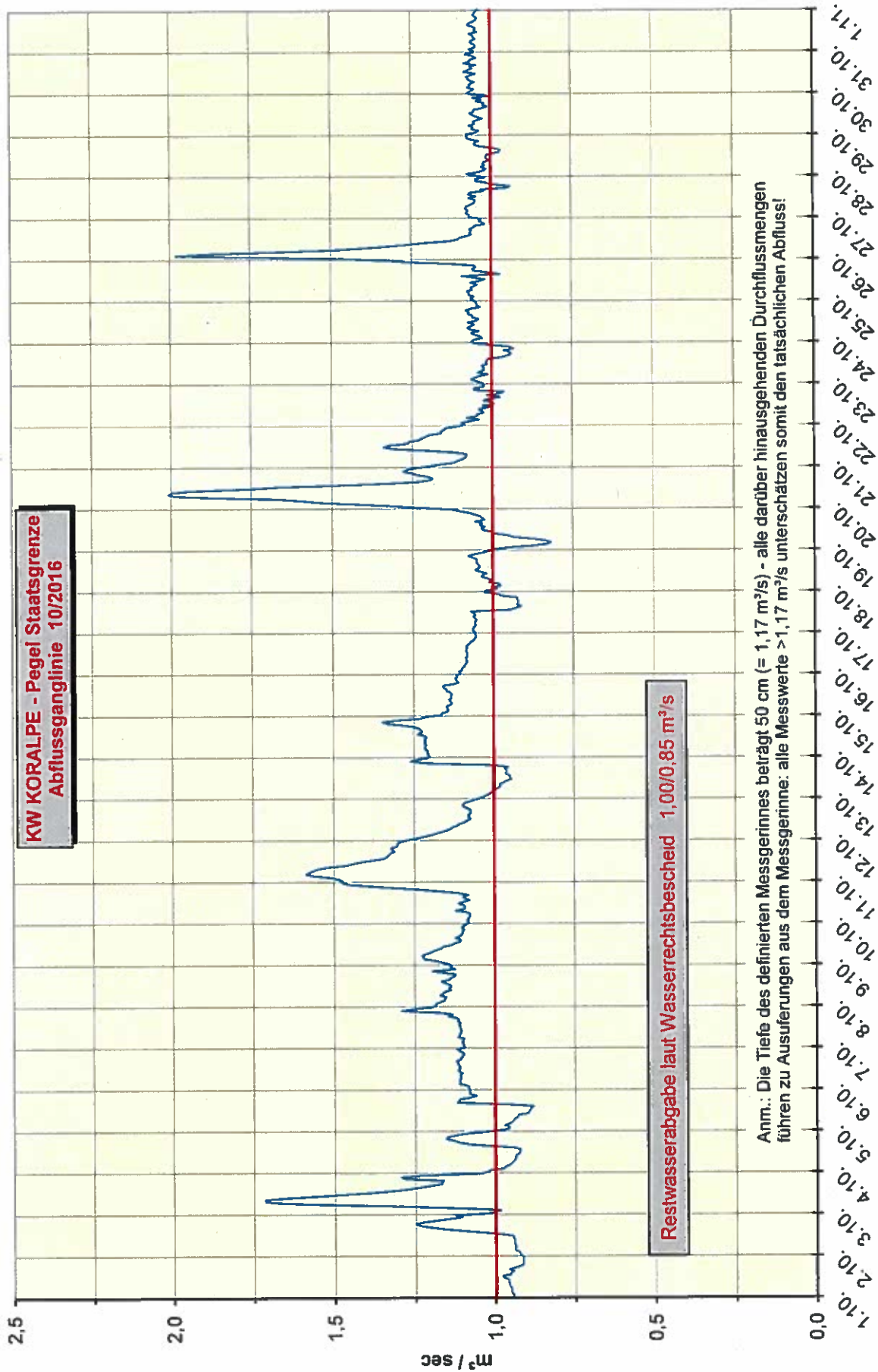
KS-KT, Talsperrenüberwachung 02/2017

KS-KT, Ort/Kreu



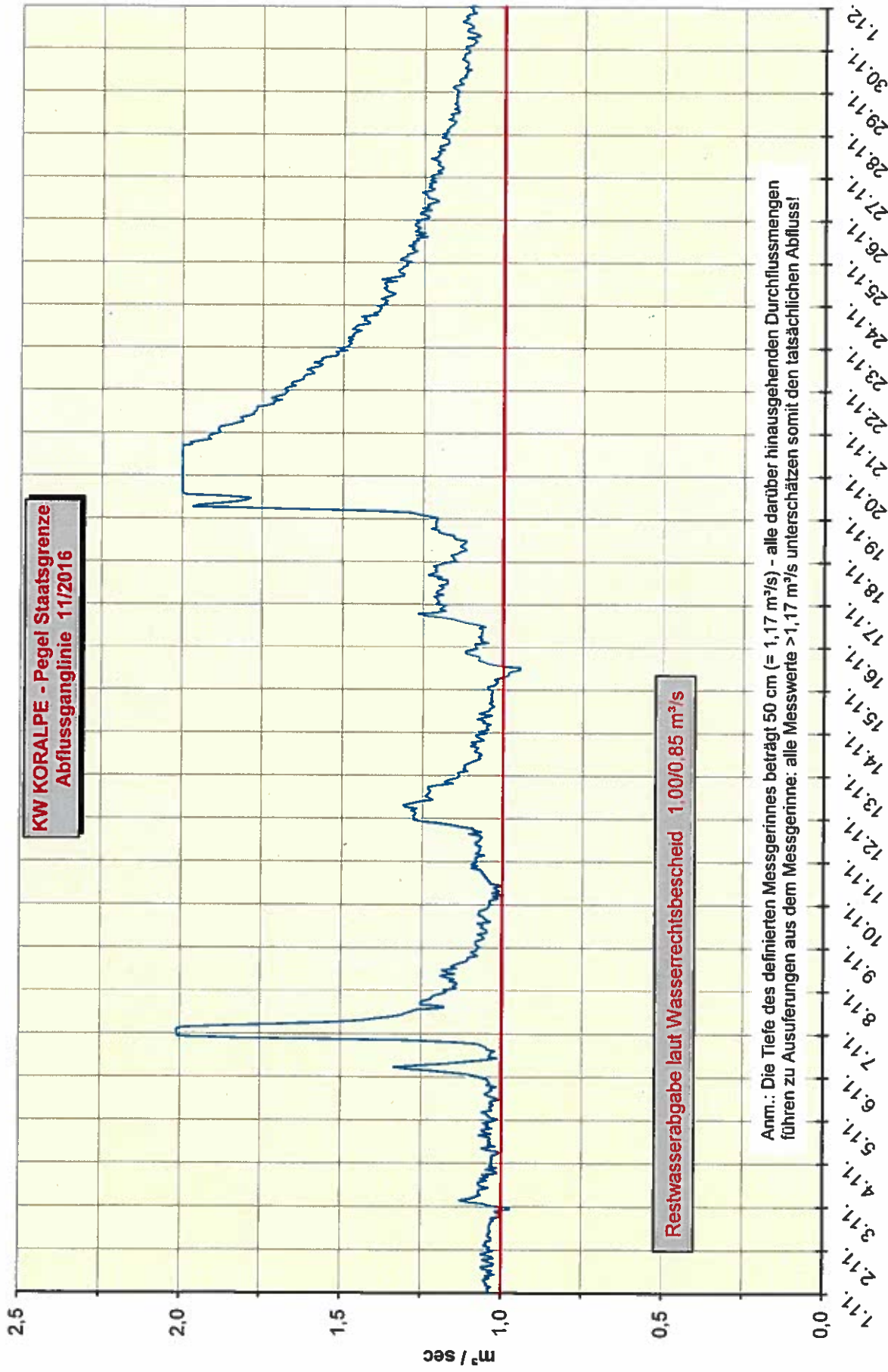
KS-KT, Talsperrenüberwachung 02/2017

KS-KT, Ord/Kreu



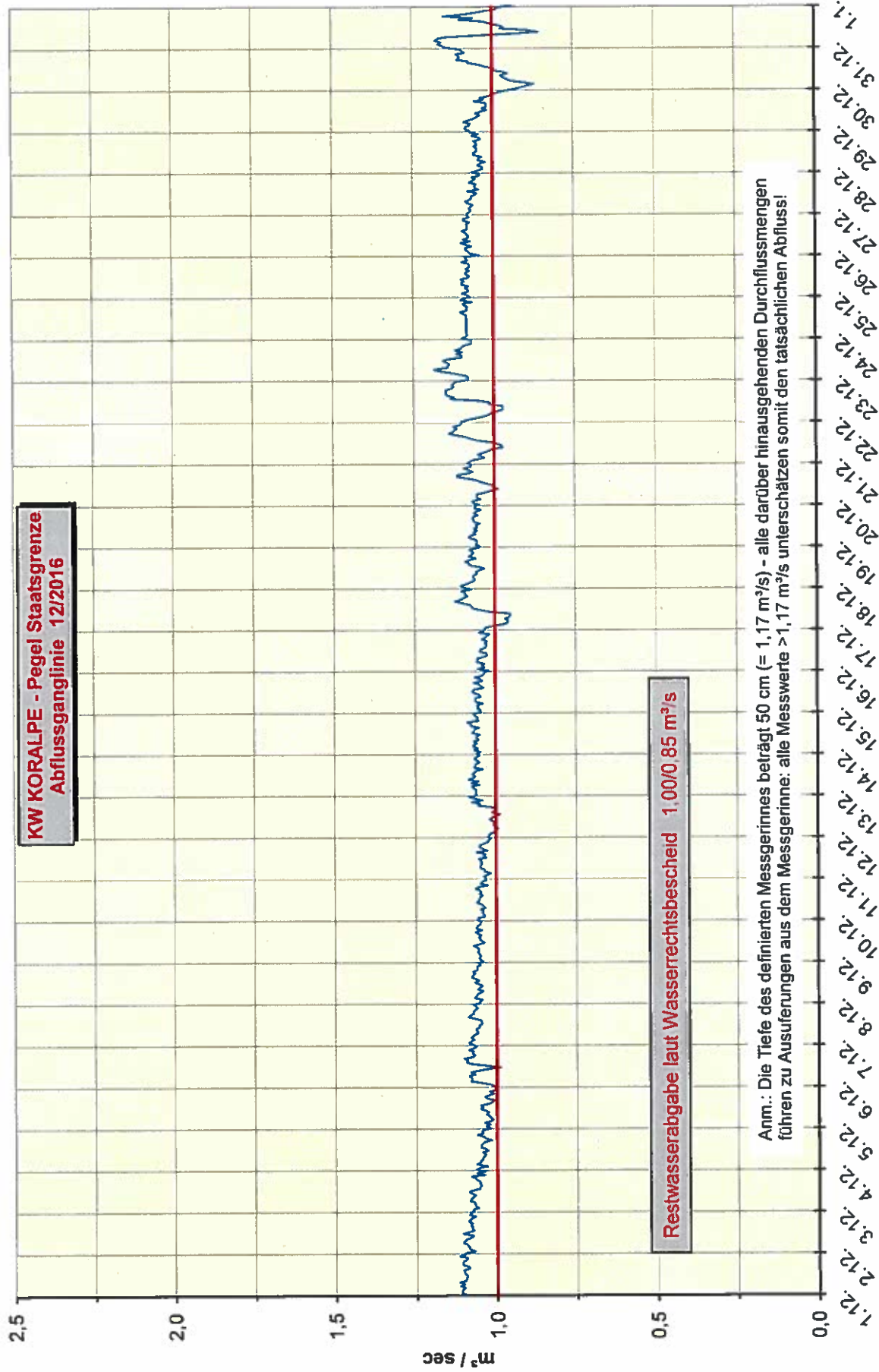
KS-KT, Talsperrenüberwachung 02/2017

KS-KT\_OndKreu



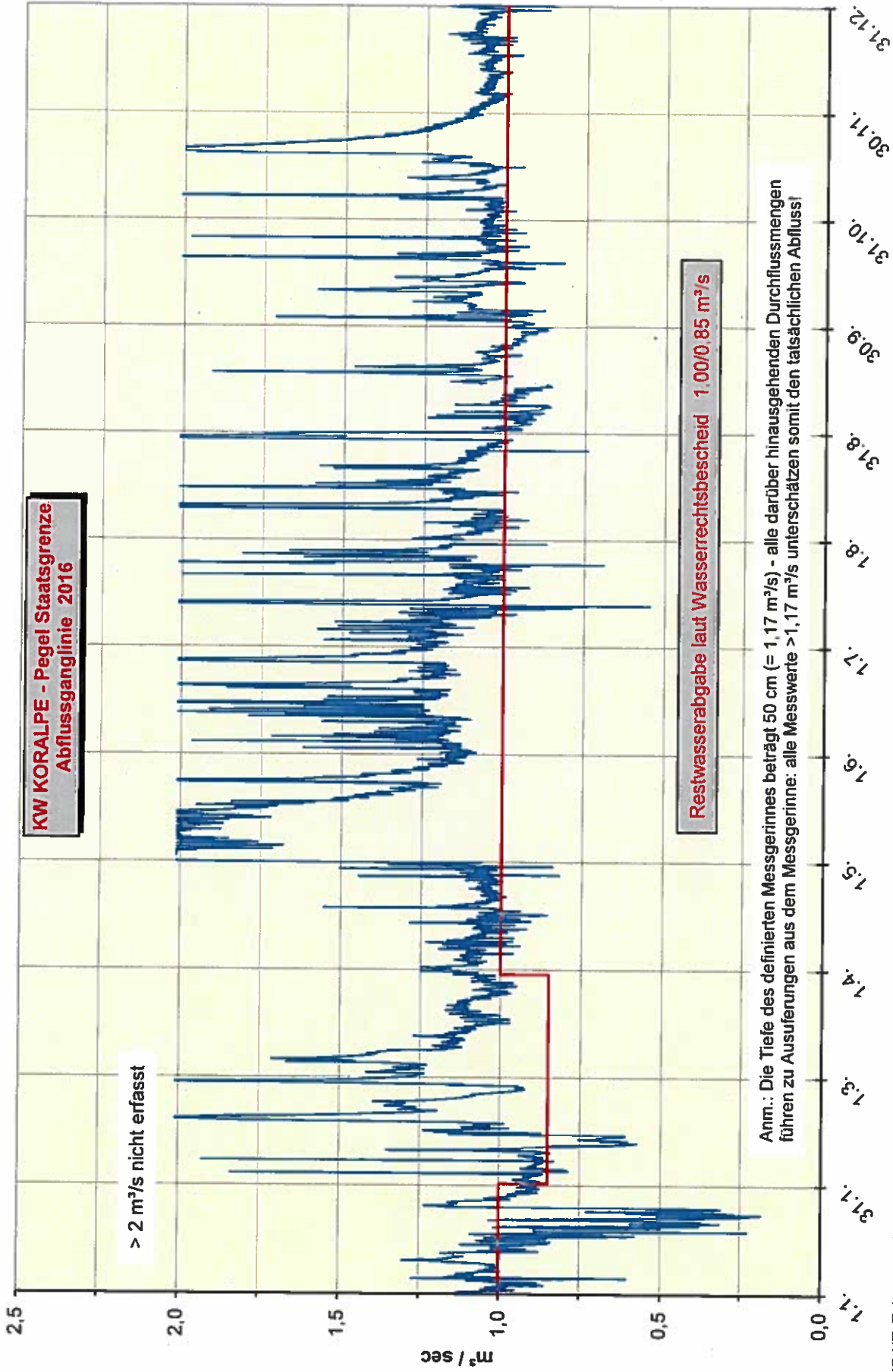
KS-KT, Talsperrenüberwachung 02/2017

KS-KT, OnMKreu



KS-KT, Talsperrenüberwachung 02/2017

KS-KT, OrtKreu



KS-KT, Ord/Kreu

KS-KT, Talsperrenüberwachung 02/2017



**Ausleitung von Einzugsgebieten bis zur "Maximalen Dotation" 2016**

